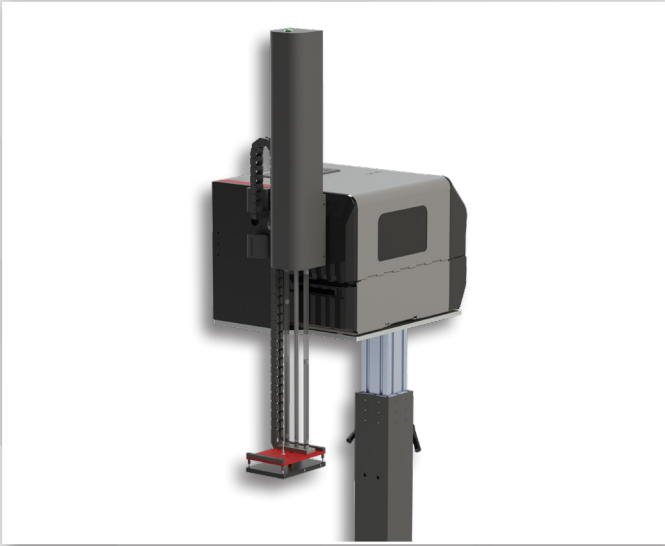


LABEL PRINTING AND APPLICATION EQUIPMENT

S_Coding
Trace Evolution

S-APPLY LITE





LABEL PRINTING AND APPLICATION

Our new **S-APPLY LITE label printing and application device** stands out for its simplicity, reliability, flexibility, and low power consumption.

Perfect for encoding traceability information on **pre-printed labels** (batch, best-by date, etc.) or **full label printing**, including bar codes, logos, or images.

It can print labels up to 300 mm/s, with a maximum width of 105 mm (4.09") and a maximum length of 210 mm (8.26"), on one side of the product.

It boasts various printing configurations and **the greatest application flexibility** to suit any need.

RELIABILITY

The S-APPLY LITE applicator device is based on a SATO CLNX4 PLUS printer. Together with the pneumatic application system developed by Smart Coding, the **most intelligent, accurate, and reliable** labelling equipment has been made possible for applications requiring a **high degree of repeatability and activity**.



Built-in intelligent sensors and real-time diagnostics on a 7" display screen for total control of the labelling process on your production line. Made of aluminium and stainless steel, it is virtually indestructible.

FLEXIBILITY

The mounting system for the applicator device offers the possibility of **various positions and orientations** for any application.

Its integrated and compact design makes it easy to install and move from one production line to another.

EASE OF USE

User interface with **7" colour touch screen** with intuitive icon-based operation and real-time diagnostics.

Totally intuitive and easy to operate for line workers.

INTEGRATION

Easy integration in production lines, communication with PCs, BBD, ERPs, artificial vision devices, bar code readers, and more by means of software specifically developed for these functions.

Compatible with leading label management software: NiceLabel, EasyLabel, etc. It includes its own **software for template editing**.

INCREASED PRODUCTIVITY

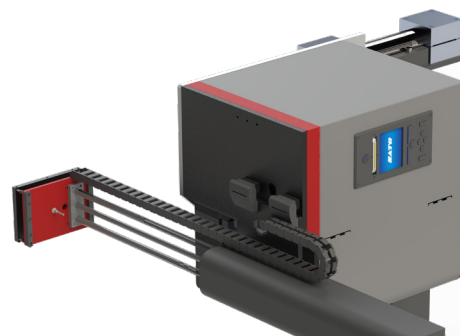
Thanks to its compact design, it facilitates loading label rolls up to 180 mm in diameter, ensuring a **perfect balance between size and performance** and minimising maintenance downtime and **maximising productivity**.

Optionally, an external system can be included which allows the label roll capacity to be extended up to 360 mm.

LOW CONSUMPTION

Electrical power supply system for the printer-dispenser module and pneumatic power supply system for the applicator module.

Maximum **efficiency and high performance** compared to conventional labellers.



S-APPLY LITE APPLICATOR RANGE

VERTICAL



Standard applicator for labelling products, containers, or packaging on the product surface itself.

HORIZONTAL



Allows labels to be applied on one side. This ensures a precise application without wrinkles.

HORIZONTALLY INVERTED



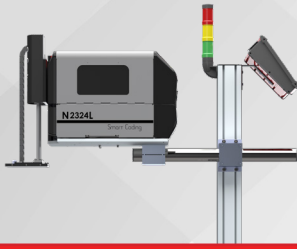
It makes side labelling possible by applying the label with a 90° turn.

SMART CODING TECHNOLOGIES

Smart Coding is a company that develops **solutions for coding, marking, and product traceability** for any sector. Manufacturer of P&A applicator devices and HD printers.

Smart Coding is a **Spanish company**, based in Castellón, with a multidisciplinary team boasting more than 15 years in the coding sector.







The company specialises in **Industrial Engineering** solutions: industry 4.0, IoT, artificial vision, automation, and robotics. Moreover, the company also develops **customised software**, all oriented towards traceability.



TECHNICAL SPECIFICATIONS

S-APPLY LITE

PRINTING METHOD	Thermal Transfer or Direct Thermal
LABELS/MINUTE	Depends on the minimum size of the label
PRINTER	SATO CL4NX Plus
PRINTING SPEED	Up to 355 mm/second
PRINT RESOLUTION	From 203 dpi to 609 dpi
MINIMUM LABEL SIZE	40x30 mm
MAXIMUM LABEL SIZE	105x210 mm
MAXIMUM PRINTING AREA	105x2,500 mm
LABEL ROLL CAPACITY	180 mm diameter (200 metres)
MAXIMUM RIBBON LENGTH	600 metres
INTERFACE	USB 2.0 (Type A and B), RS232C, IEEE1284, EXT, NFC, Ethernet (IPv4/v6) compatible with: TCP/IP, LPR, FTP, SNMPv3, NTP, HTTP, DHCPv4, stateless auto-configuration, stateful auto-configuration (DHCPv6).
ENERGY REQUIREMENTS	AC100V - AC240V ±10%, 50/60 Hz, Power supply with automatic calibration
AIR CONSUMPTION	None
ENVIRONMENTAL CONDITIONS	0 °C - 40 °C, 30-80% relative humidity without condensation
WEIGHT	20.1 kg (excluding stand)
CERTIFICATIONS	RoHS compliant, Bluetooth, WIFI certified, NFC Android
STANDARD FEATURES	
USER INTERFACE	7" LCD colour touch screen
PRODUCT DETECTOR	Direct reflection PNP photocell, adjustable range (other types optional)
PRESENCE SENSOR LABEL	Direct reflection bottom suppressor PNP photocell (up to 30 mm)
SENSOR RIBBON / LOW LABEL	Included
TAMP MODULE	Non-contact application by means of pneumatic reboiler
PRINT ON DEMAND	Print the following label to be applied on demand
ON-SCREEN DIAGNOSTICS	Test inputs and outputs without the need for a multimeter
INFORMATION	Status, print counters, repeat cycle error monitor, start position sensor, printer status monitor.
OPTIONAL FEATURES	
WARNING LIGHT	3-colour status indicator
LABEL CAPACITY EXPANSION	Optional external module for rolls up to 360 mm.
OPTIONAL I/O MODULE	By request

-  Headquarter - Beato Tomás de Zumárraga 7, ground floor. 01008 Vitoria, Álava
-  Factory - Rda. Circunvalación 188, CEEI building, F module, 12003 Castellón de la Plana
-  +34 654 321 789
-  info@scodingtech.com
-  www.scodingtech.com/
-  Valencia - Basque Country



This brochure has been printed on recycled paper

All company and product names in this brochure are the property of Smart Coding Technologies