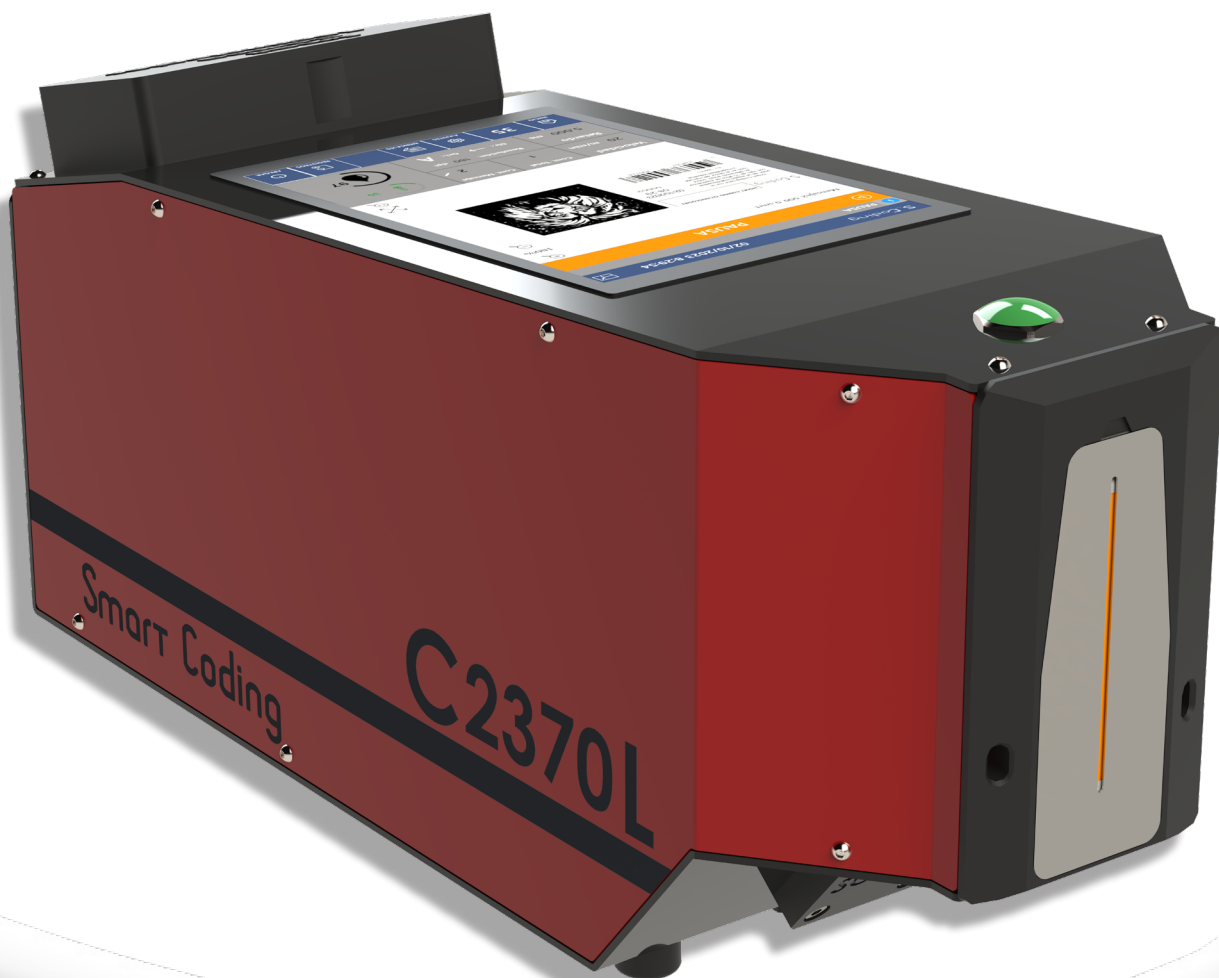
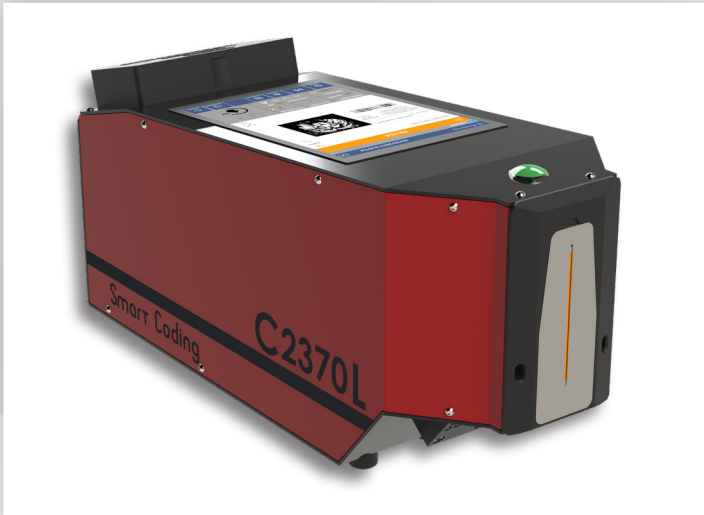


HIGH RESOLUTION PRINTER FOR PACKAGING MARKING

S_Coding
Trace Evolution

S - PRINT





Smart Coding's Spanish produced HD industrial printers are a series of **high-resolution printers designed for marking large messages on porous surfaces.**

It stands out for its small size, simplicity, reliability, flexibility, and low power consumption.

It is perfect for **secondary packaging identification.** It facilitates the printing of text, numbers, bar codes, or images in real time, **integrated with the production line.**

It enables printing on the product from 90 to 720 dpi up to a speed of 160 m/min, with a maximum height of 70 mm (LITE 17 and PRO 17 models) or 17 mm (LITE 70 and PRO 70 models). It boasts various printing configurations and the greatest flexibility to suit any need.

RELIABILITY

Smart Coding has developed the most intelligent, accurate, and reliable printing equipment for applications requiring a **high degree of repeatability and activity.**

Integrated smart sensors: laser proximity sensor, on-screen configurable detection distance, and automatic line speed calculation. Real-time diagnostics on an 8" screen for total control of the printing process.

Made of **aluminium and stainless steel.**



FLEXIBILITY

The mounting system of the printing unit and the versatility of the printing module of the PRO 17 and PRO 70 devices offer the possibility of **various positions and orientations** for any application.

Its **integrated and compact design** makes it easy to install and move from one production line to another.

LOW CONSUMPTION

Real-time monitoring of ink consumption per printing. The amount of ink used per printing can be configured via software. Percentage of ink remaining in the ink tank. **Consumables with 0.5 L capacity.**

EASE OF USE

User interface with 8" colour touch screen and 1280x800 resolution, with **intuitive icon-based operation** and real-time diagnostics. **Simple and intuitive software.** Configurable security levels according to the specific role of different users.

Quick and precise height and depth **adjustment with no need for tools.**

HIGHER PRODUCTIVITY

Up to 160 m/min printing speed. Manages up to 4 devices through a single controller. Design editing software integrated in the printer and **instant purge without waste.**

INTEGRATION

Easy integration in **production lines**, **communication** with PCs, BBD, ERPs, artificial vision equipment, bar code readers, and more by means of software specifically developed for these functions.

Compatible with leading label management software applications: NiceLabel, EasyLabel, etc. It includes its own software for template editing.

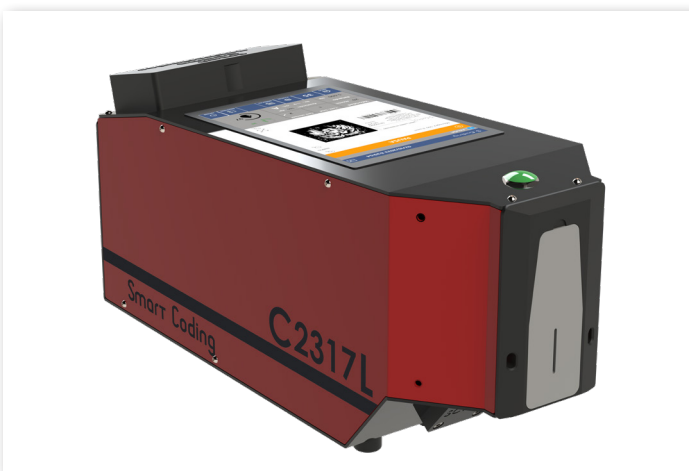
SUSTAINABILITY

Use of **MOF (Mineral Oil Free) inks** based on vegetable oils. This ink does not affect the product or the recyclability of the packaging carton. This results in a more sustainable product and ensures **minimal impact on the environment**.

The ink bottles for the S-Print Series printers are **100% recyclable**.

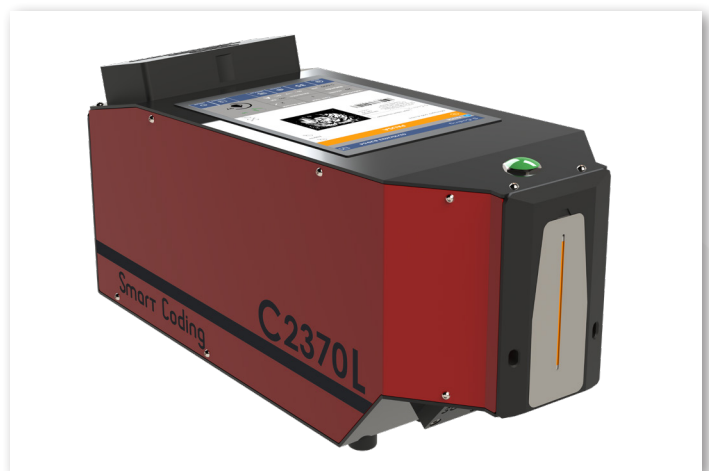
S-PRINT DEVICE RANGE

S-PRINT LITE 17



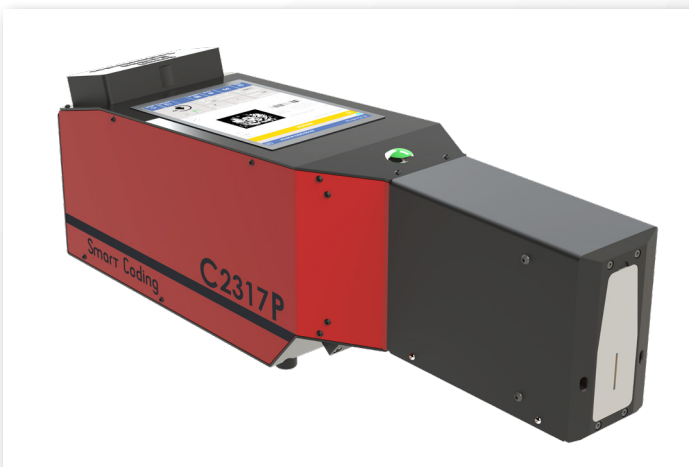
Compact device that allows **17 mm high** printing in any direction.

S-PRINT LITE 70



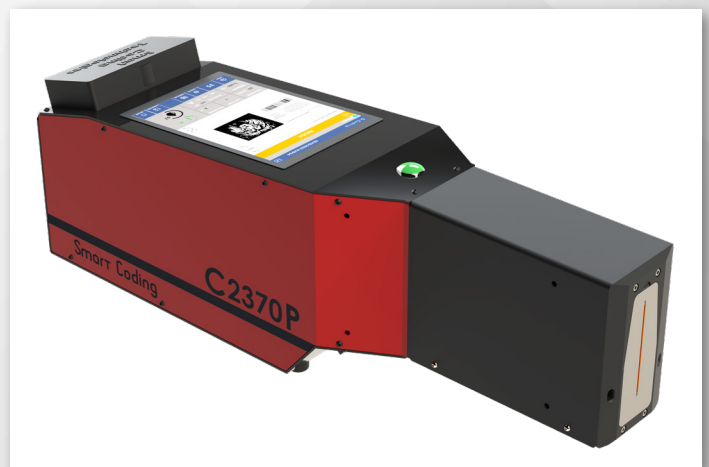
This compact device can print up to **70 mm high** in any direction.

S-PRINT PRO 17



The device allows printing at a **height of 17 mm** in any direction. Particularly **suitable for locations with limited access**. The printer module can be extended by 60 mm and rotated up to 90° for vertical marking or inclined conveyor belts.

S-PRINT PRO 70



It has the same features as the PRO 17, but allows printing at a **height of 70 mm**. Designed for marking in **areas with reduced access**. Its printer module can be extended by 60 mm and rotated up to 90°.

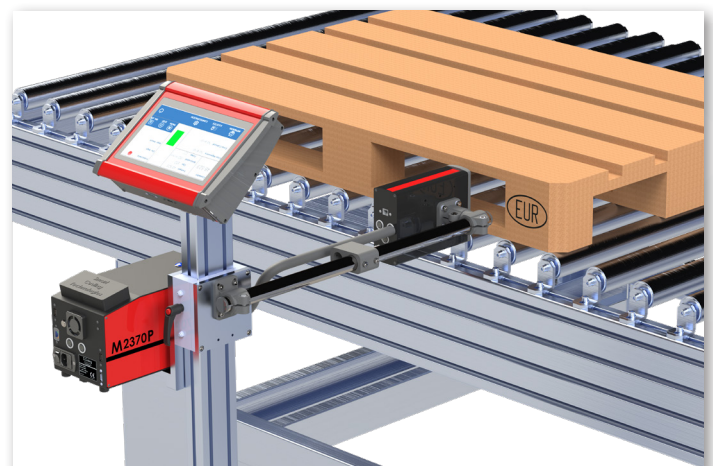
S-PRINT MODULAR

The S-PRINT has a modular layout that is perfect for marking on production lines where space is limited or difficult to access.

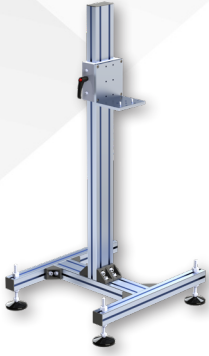
The print head can print top, bottom, side, reverse side, perpendicular, rear, and reverse perpendicular. Available for 17 or 70 mm print heads.



EXAMPLES OF MARKINGS



ACCESSORIES

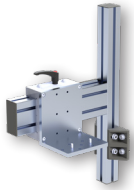


ADJUSTABLE SUPPORT

Aluminium bracket for S-PRINT Series equipment.

Independent of the conveyor belt and with the possibility of mechanical mounting to the floor.

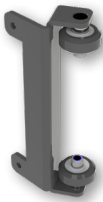
Sliding carriage with guides made of self-lubricating material for optimal adjustment without the need for tools.



ONLINE SUPPORT

Aluminium bracket for S-PRINT Series devices, for direct attachment to the conveyor belt.

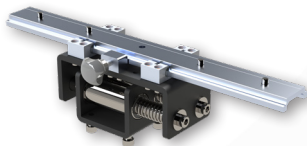
Sliding carriage with nylon guide for easy, optimum adjustment.



PRODUCT GUIDING SYSTEM

Product guiding system for the S-PRINT series.

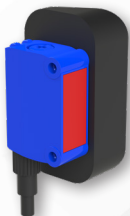
Protection of both the product to be printed and the printing equipment from knocks and jams in the conveyor system.



ADDITIONAL PROTECTION SYSTEM

Shock absorption system for S-PRINT Series devices. Protection of both the printing equipment and the product to be printed.

Absorption of shocks to the printing equipment and prevention of jams in the conveyor system.



MAGNETIC MOUNTING PHOTOCELL KIT

Magnetic mounting kit for S-PRINT Series devices directly on the printing unit body.

Quick, easy, and tool-free adjustment.



S-PRINT CONTROLLER

10.1" Display Controller for single head equipment and Multihead Controller for the simultaneous management of up to 4 S-PRINT Series devices.

Includes print design editing software, IP65 protection rating, and 10.1" display screen.

TECHNICAL SPECIFICATIONS


PRINTING METHOD	Piezoelectric Print head
PRINTER	LITE 17, LITE 70, PRO 17, and PRO 70
PRINTING SPEED	Up to 160 m/min.
PRINT RESOLUTION	Up to 720 dpi
MAXIMUM PRINTING HEIGHT	17 mm (LITE 17, PRO 17) 70 mm (LITE 70, PRO 70)
MAXIMUM PRINTING LENGTH	2000 mm
INK BOTTLE CAPACITY	500 ml
STANDARD INTERFACE	USB 2.0 (Type A), Ethernet (IPv4/v6) compatible with: TCP/IP, LPR, FTP, SNMPv3, NTP, HTTP, DHCPv4, stateless auto-configuration, stateful auto-configuration (DHCPv6)
ENERGY REQUIREMENTS	AC100V - AC240V ±10%, 50/60 Hz, Power supply with automatic calibration.
ENVIRONMENTAL CONDITIONS	5 - 45 °C / 10-85% RH (without condensation)
WEIGHT	LITE 4.5 Kg (excluding stand) / PRO 5.5 Kg (excluding stand)
DIMENSIONS	LITE: 150 x 195 x 412.5 mm (W x H x D) PRO: 150 x 195 x 592 mm (W x H x D)

STANDARD FEATURES

USER INTERFACE	8" LCD colour touch screen. 1280x800 resolution
PRODUCT DETECTOR	PNP direct reflection photocell, adjustable range (other types optional)
WARNING LIGHT	3-colour status indicator
ON-SCREEN DIAGNOSTICS	Information messages on the screen
ON-SCREEN INFORMATION	Status, print counters, error monitor, product sensor, printer status monitor, ink level, ink temperature.

OPTIONAL FEATURES

WARNING LIGHT	Modular 3-colour status indicator
FIXED SUPPORT	Adjustable from 200 to 1100 mm.
SOLID SUPPORT	Mounting to existing conveyor belts
GUIDED PRODUCT SYSTEM	Product and print head protection
SHOCK ABSORPTION SYSTEM	Product and print head protection
PRODUCT DETECTOR	PNP background suppression photocell, direct reflection, and adjustable range
CONTROLLER	10.1" Display Controller for 1 print head and Multihead Controller for up to 4 print

 Headquarter - Beato Tomás de Zumárraga 7, ground floor. 01008 Vitoria, Álava
Factory - Rda. Circunvalación 188, CEEI building, F module, 12003 Castellón de la Plana

 +34 654 321 789

 info@scodingtech.com

 www.scodingtech.com/

 Valencia - Basque Country

S_Coding
Trace Evolution



This brochure has been printed on recycled paper

All company and product names in this brochure are the property of Smart Coding Technologies